

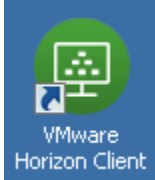
VDI Setup Guide

After WLS has confirmed IP access is set up, the staff person needs to install the VMware Horizon Client on the device they will be using to connect.

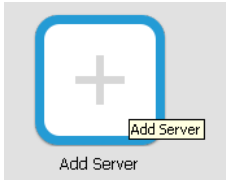
1. Go to https://my.vmware.com/web/vmware/details?downloadGroup=CART19FQ4_WIN_410&productId=578&rPId=29501 to download the client software.
2. After the download is finished, follow the prompts to install the client.

After installation, to get started, add the server (a one time step),

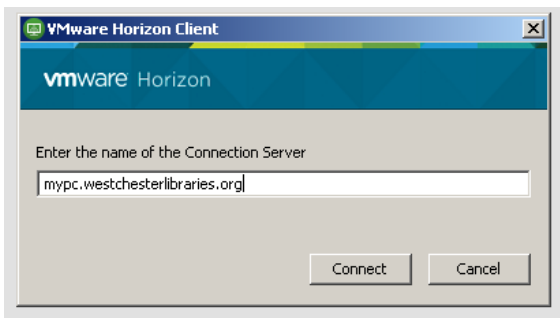
1. Click the VMware Horizon Client icon to open the program



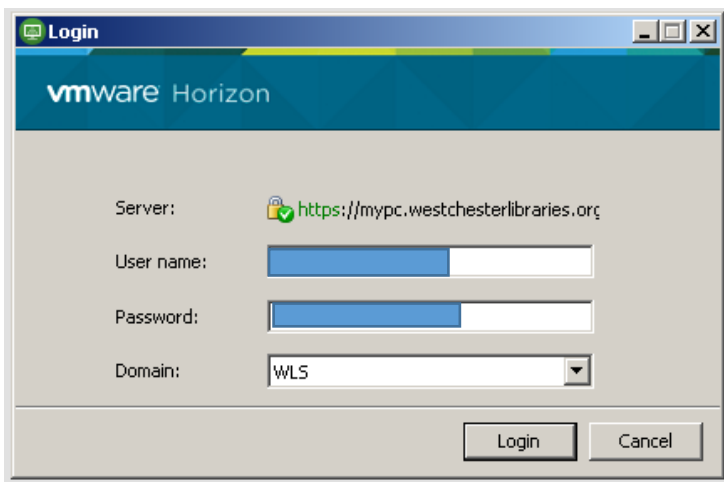
2. Click "Add Server."



3. In the form, enter mypc.westchesterlibraries.org



4. Another box will appear, **type in your WLS A/D Credentials** like normal, then click login. (Example below)



5. Click ok. A new icon for mypc.westchesterlibraries.org will display on the desktop.

D. To log in then, and for all subsequent logins,

1. Open the mywc.westchesterlibraries.org icon. The AD login screen will display.
2. Enter your AD credentials as you do in the library
username: firstname.lastname
password
3. When finished with the session, go to Start>Shutdown